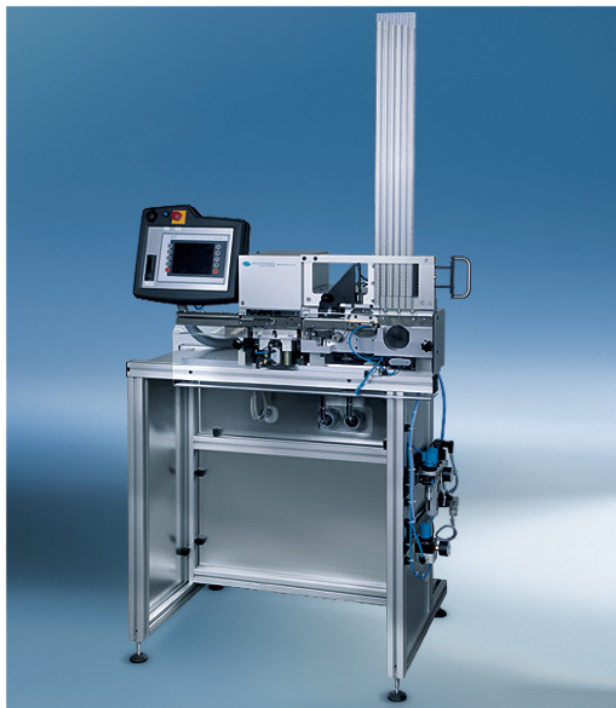


## STOCKOMAT ECO-TRONIC professional line



### WT 165.9.0

**Standard machine without program library to process connector systems ECO-TRONIC and ECO-TRONIC pro**

#### Features

- Automated connector feeding out of economical tube packagings
- Easy and clear to operate
- SPS control with plain language display
- Single wire termination
- Empty-chamber programming
- Small, compact machine size
- Low power consumption
- Low setup times, when changing to different connectors
- Certification to CE and EMV
- Quality assurances by integrated testing unit: Electrical conductivity test between conductor and contact

#### Technical data

Drive mechanism	pneumatic/electrical
Cycle time	0,5 sec. without handling
Operating voltage	230V/ 50-60 Hz 110V, only with additional transformer
Connected load	0,9 kW
Air consumption	1NL/cycle
Air pressure	6.5 bar
Weight	115 kg
Ambient temperature	max. 40° C

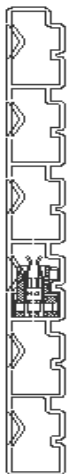
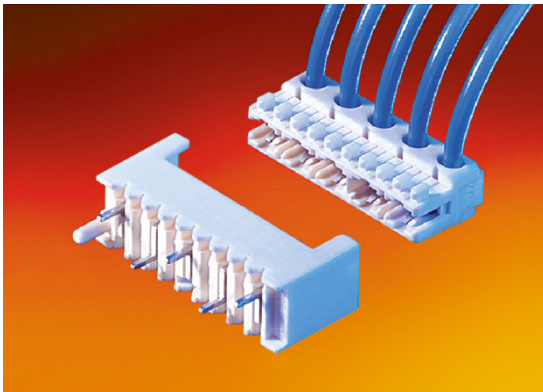
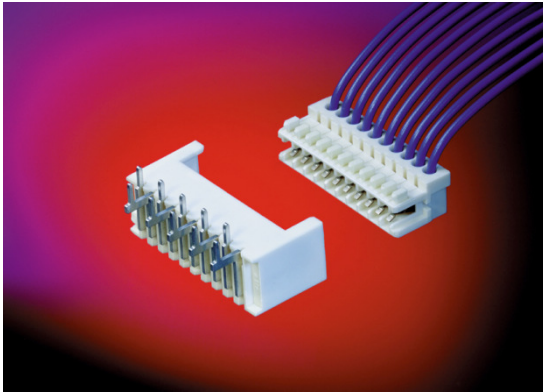
#### **Min. cable length suitable for assembly:**

one-side connected	50 mm
two sided connected	100 mm

### WT 165.9.11

Machine as above with integration in automatic production lines

## STOCKOMAT ECO-TRONIC professional line



ECO-TRONIC



ECO-TRONIC pro

### Product magazines

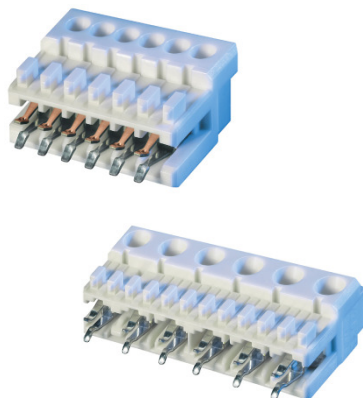
### Connector series ECO-TRONIC

<i>ECO-TRONIC</i>	<i>Positions</i>	<i>Wire size</i>
MF 7234	2 - 20	0,22-0,35 mm <sup>2</sup>
MF 7236	2 - 20	0,22-0,35 mm <sup>2</sup>
MF 7238	2 - 20	0,22-0,35 mm <sup>2</sup>
MF 7242	2 - 20	0,22-0,35 mm <sup>2</sup>
<b>ECO-TRONIC pro</b>		
MF 7260	2 - 10	0,35 - 0,75 mm <sup>2</sup>
MF 7262	2 - 10	0,35 - 0,75 mm <sup>2</sup>

### Quantities in product magazines

<i>Positions</i>	<i>ECO-TRONIC Standard packing/</i>	<i>ECO-TRONIC pro</i>
2	-	7008
3	7008	4704
4	5568	3456
5	4704	2784
6	4032	2304
7	3456	1920
8	3072	1728
9	2784	1536
10	2496	1344
11	2304	
12	2112	
13	2016	
14	1824	
15	1728	
16	1632	
17	1536	
18	1440	
19	1344	
20	1344	

## STOCKOMAT ECO-TRONIC professional line



### Conversion from ECO-TRONIC- to ECO-TRONIC pro-connectors

The conversion from ECO-TRONIC to ECO-TRONIC pro and vice versa is done by changing the following parts:

- Connector slide rail
- Connector feeder
- Control program
- Cable entry support
- Contact insertion plunger

Setup time approx. 10 min.

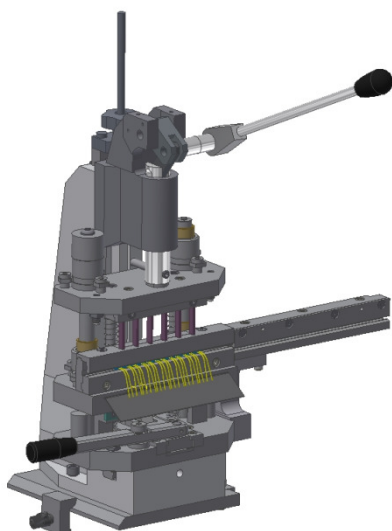
### Options

The machine can be equipped with the following optional features:

#### Option 1: Cutting device for polarizing peg

Optionally this machine can be equipped with a cutting device for polarizing pegs. The codings pegs are cut in accordance with the programmed configuration.

#### Manual cutting station



#### Option 2: Manual cutting station for connectors in chain

2-ways-ECO-TRONIC-connectors are delivered as a chain of two connectors. Optionally a manual cutting station to separate these chains of ECO-TRONIC-connectors is offered.

Only new machines can be equipped with this feature, older machines cannot be upgraded.

#### Upgrading Options

Older WT 165.5/ WT 165.5.1 can be upgraded by a conversion set to enable them, to process ECO-TRONIC pro-connectors

If this upgrade is required, please get in touch with our sales or our customer service department.